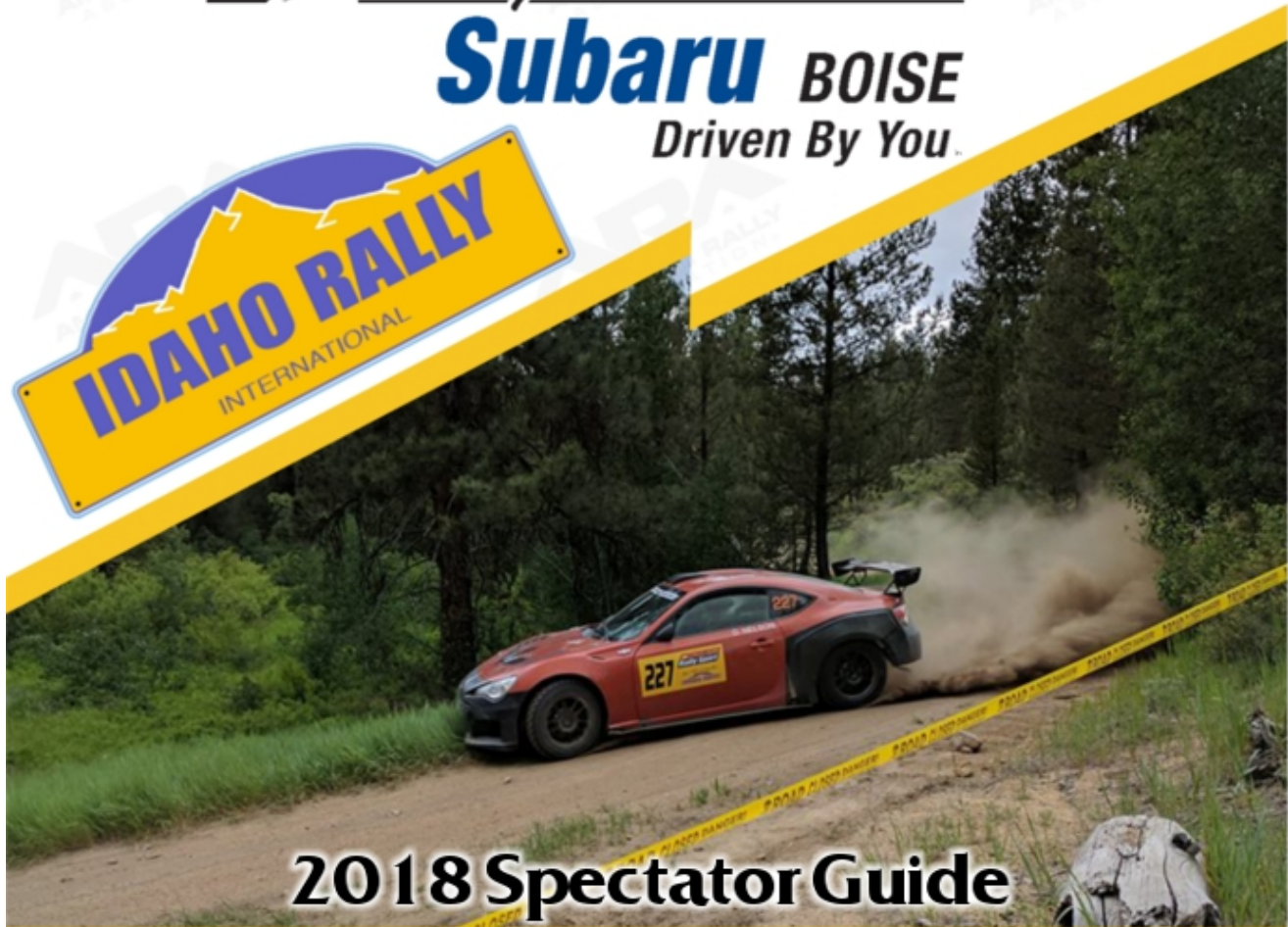


 *Larry H. Miller*

**Subaru** BOISE  
Driven By You.



**2018 Spectator Guide**

**Activities from the 14th to the 16th**



# ***2018 Idaho Rally***

**Hello and welcome to the 2018 Larry H. Miller Idaho Rally International. Presented by DF Development, Equify, Cactus Bar and is being directed by the Idaho Rally Group.**

**For 2018 we moved to ARA sanctioning. This later came with the added bonus of being partnered with USAC which is a FIA associated sanctioning body. This, we believe will lead to more visibility for our event and the entire sport of Rally Racing. As with other ARA events there will be some live coverage of the event by ARA. So if you cannot make it to the event you will still be able to catch up on the racing excitement on the ARA Facebook page.**

**Most that attended last year remember that there was one location for spectators to view the excitement. This year we have added a second. The maps in this guide will provide the two locations. You are welcome to go between those two locations since there will be access to them during the event. Be sure to follow the instructions of the officials manning those locations so that you cross safely over the competition road. As always the best view of competition is by volunteering for one of the jobs within the event. As of the writing of this article we have closed the volunteer process. You can still come out and volunteer but you will not get the swag or meal tickets. Be sure to sign up early next year to get the goodies.**



# **2018 Idaho Rally**

*continued*

The Idaho Rally Group attempts to make the event a great experience for all involved. The competitors get great roads, rebates on travel, pricing based on entry type, and access to test and tune events. The Volunteers get great access to view the race from a perspective not available to the public, Free food each day, Swag, as well as bragging rights. "Yea I helped run the Idaho Rally International." There are not many places that a camping trip can turn into an edge of your seat high speed competition with some of the best drivers in the world! Then we have our sponsors. They make the financial wheels turn. In return they get their name on one of the largest rally events in the United States. Live coverage exposure that is available locally and around the world, With teams from around the globe the sponsors are getting their money's worth and then some. We Appreciate there contribution. In this guide, on the shirts as well as on various other mediums you will see the great partners Idaho Rally has and welcome you to visit and show your support to them. Be sure to tell them you saw them at the Idaho Rally. It might help Grease their wheels. Next in the chain is our sanctioning. They essentially provide legitimacy to the sport. They give the factory teams a place to prove there metal as well as the ability for the amature to pit their abilities against the big names. And then there is Idaho Rally Group. The exhausted men and women that toil to make this all come together. We do this out of love for Rally. This whole amazing event is the product of endless hours of work and many many sleepless nights. If you see us during the event and we look crazed. Now you know why. Don't be afraid, come up and say hi. We love to hear from every one. Let us know what you love or what you don't. We are always here to take your feedback.

Idaho Rally Group



**FORD PERFORMANCE**

# Idaho Rally Bios



## TRAVIS NEASE - Hi Camp Racing

**DirtFish Rally School instructor Travis Nease turns classroom theory into real world practice in the championship. Nease became interested in rally while competing in endurance mountain bike racing and brings an endurance mindset into his driving. A champion of competing with a measured pace, Nease drives consistently and knows when to push - he's always a podium threat. Even switching co-drivers multiple times this season hasn't slowed him down.**



## JEFF SEEHORN - Seehorn Rally Team

**Owner, operator, builder, and driver for the Seehorn Rally Team, 2017 ARA Restricted4WD class champion Jeff Seehorn exemplifies the privateer racing spirit. Racing for most of his life, Seehorn started his career off-road racing motorcycles before taking on tarmac with road-racing bikes and. In 2015, made the transition from 2 wheels to 4 and made an immediate impact on the rally scene with his quick pace and skilled driving.**

*Finer Floors*

Commercial • Contract  
Founded 1969

344-5531 Office  
344-5533 Fax  
finerfloors@msn.com  
finerfloorsinc.com

RCE-176

5122 Fairview Ave.  
Boise, Idaho 83706

**1214 1st St S Nampa, Idaho**



**Nampa, ID's premiere growler fill station  
and craft beer bar. Stop by for your  
favorite craft beer!**

**(208) 466 - 0981**

**[prefunkbar.com](http://prefunkbar.com)**

# ***2018 Event Activities***

**The activities open to the public for this years event run from Thursday to Sunday.**

**We start Thursday with competitor registration and early tech. While registration is closed to the public the early tech can be viewed. We will be at our host hotel Best Western in Boise near the Airport. If you come out Please be respectful. Most of the competitors are coming in from a long drive and may be tired. The scrutineers can answer questions but they will be very busy.**

**Friday will be the Park Expose at Larry H Miller Subaru. All competitors are required to attend this event so this will be your best time to see everyone in one spot. There will be several things going on with this event to make it enjoyable so come out and check it out. The bulk of the competitors will have their vehicles inspected here so you will be able to see the process play out.**

**Saturday and Sunday are competition days. You may not have much of a chance to interact with the competitors during racing but they are all going to be in and around Idaho City. This place will be **PACKED!** So don't expect to be able to drive into the downtown area. Be cautious and drive slowly. Once you find a place to park you are welcome to visit the various festivities, vendors, and available competitors. Please be respectful and keep in mind some of these competitors and their teams may be hard at work and may not have much time to visit.**

**Sunday will end with a second Park Expose and the Trophy ceremony in Idaho City. Every one is encouraged and welcome to come out and see the drivers and enjoy the event. Although the officers of the Idaho Rally Group board and there senior members will be there to talk to, we understand we are not at the top of your list.**



**AUTOWEEK**



Call us at  
208-629-3917  
208-995-9780

<https://boiseautowraps.com/>



We are the only PDAA Master Certified Installation company in Idaho.



# AMERICAN RALLY® ASSOCIATION

Series classification	Car class	Driver first Name	Driver Last Name	Co-Dr. First Name	Co-Dr. Last Name
National & Regional	L4WD	Krystian	Ostrowski	Michael	Szewczyk
National & Regional	O4WD	Ken	Stanick	Shayne	Peterson
National & Regional	NA4WD	Blake	Lind	Tricia	Lind
National & Regional	O2WD	Erik	Potts		
National & Regional	L4WD	Matthew	Dickinson	Daniel	Piker
National & Regional	O2WD	Chris	Miller	Tiffany	MacDonald
National & Regional	O2WD	Jason	Bailey	Chris	Kremer
National & Regional	L4WD	Kevin	Walsh	Scott	Anderson
National & Regional	O2WD	Jason	Bailey	Chris	Kremer
National	L4WD	Jason	Powers	Jennifer	Taylor
National	L4WD	Travis	Nease	Melissa	Sherowski
National	L4WD	Jeff	Seehorn	Karen	Jankowski
National	L4WD	Sam	Albert	Michelle	Miller
National	O4WD	David	Higgin	Craig	Drew
National	O4WD	Patrik	Sandell	Per	Almqvist
National	UTV	Brandon	Semenuk	John	Hall
National	L2WD	Jordan	Guitar		
National	L4WD	Cameron	Steely	Preston	Osborn
National	O2WD	Keanna	Erickson	Rhianon	Gelsomino
Regional	NA4WD	Kris	Hamrick	Jay	Bantz
Regional	NA4WD	Spencer	CRABB	Kyle	Maurice
Regional	O4WD	Eric	Genack	Tracy	Manspeaker
Regional	NA4WD	Chris	Caylor	Jennifer	Caylor
Regional	NA4WD	Philip	Bergman		
Regional	O4WD	Chris	O'Driscoll	Lori	O'Driscoll
Regional	NA4WD	Robb	Spencer	kaden	spencer
Regional	O4WD	Ryan	Bouffieux	Steve	Winnat
Regional	NA4WD	Jens	Schkade		
Regional	L2WD	Michael	Cadwell	Omar	Cardenas
Regional	L4WD	Matthew	Brassfield	Kristi	Berg
Regional	O4WD	Mark	Tabor	Kathryn	Hansen
Regional	UTV	Kel	Thomas	Kaden	Sinclair
Regional	O2WD	Eric	Bailey	Michael	Milos
Regional	O2WD	John	Hill		
Regional	L2WD	Elijah	Sullivan	Shannon	Jidas
Regional	L4WD	Steve	Greer		
Regional	O2WD	garth	Ankeny	Russ	kraushaar
Regional	UTV	Frank	Harris		
Regional	O2WD	Nate	Tennis		
Regional	O4WD	Michael	Bond	Jack	Penley
Regional	O2WD	Sarah	Helmick		
Regional	L4WD	Carson	Roskelley		
Regional	O2WD	Jason	Webster	Brandon	Harer



# **E.M. MOTORS**

7400 W State st., Boise, ID 83714

Phone: (208) 853-2886

[emmotorsboise.com](http://emmotorsboise.com)

providing the ultimate automobile  
buying experience...

---

## ***Stage Description cont,***

### **Meadow Creek**

**Tight and technical stage. It is not a fast stage. This stage is designed to be driven smart. This puts focus on the competitors talent and skill rather than horse power and guts. This is the road that can see a low power car best a fire breather. Some hate it. Some love it. We all wanna see you own it.**

### **Spanish fork**

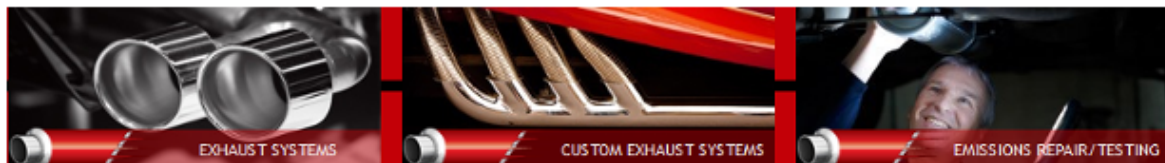
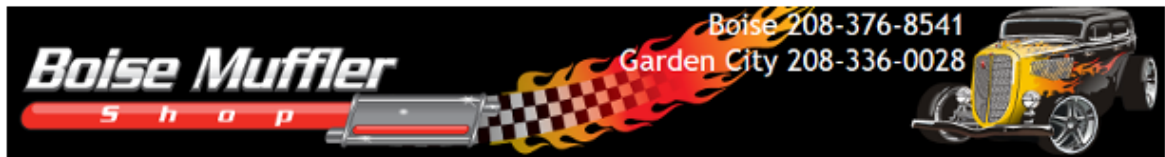
**It is hard to describe Spanish Fork. But here goes. Tight with lots of elevation change. Twisty, Flowing, Fun. Don't let the start determine how you feel about this stage. It quickly changes.**

**This stage will frustrate you, it will scare you, and when all is said and done it will make you love it. P.S. Competitors, don't forget to show off for the fans.**



Your Quest For Energy is  
Finally Over!

<https://rhinorush.com/>



## ***Stage Descriptions***

**This years Idaho Rally international will take place on the famous Harris Creek, beloved Grimes Pass, controversial Meadow Creek, and a new road Spanish Fork. This gives over 200 event miles over a two day period. Some roads will be run multiple times with meadow creek only being run on Sunday and Harris Creek only being run on Saturday.**

### **Harris Creek**

**An amazing combination of wide open fast areas with swift and challenging curvy elevation changes. This road has become the stage they all talk about. It has everything on an amazingly smooth packed surface.**

### **Grimes Pass**

**Fast becoming a heart pumping favorite. You cannot take this one lightly. Sudden elevation changes with corners that are tight and blind. Wide open but very rocky lengths making for a floating sensation. This road makes the iron nerves of competitors a little jittery. And they seem to love it.**

## Events schedule

Larry Miller Park expose

Friday 14th from 4:00PM to 6:00pm  
11196 W. Fairview Ave, Boise ID 83713

Saturday competition from 9:03AM to 6:18PM

Sunday Competition from 9:18AM to 4:05PM

Sunday Park expose and awards ceremony.  
4:10PM to 5:30PM

Spectator area viewing times!

Saturday

Grimes Pass

9:45AM to 12:03PM

12:53AM to 1:11PM

Spanish fork

10:41AM to 12:59PM

1:49PM to 3:11PM

Sunday

Spanish Fork

9:18AM to 11:33AM

12:38PM to 2:56PM

Grimes Pass

9:54AM to 12:12pm

1:11PM to 3:29PM

For detailed information please download the "final Supps" at  
[idahorally.org](http://idahorally.org)



2018 Honda FourTrax  
Rancher



2018 Honda Africa Twin  
Adventure Sports DCT



2018 Honda Grom



2018 Honda Pioneer 1000-5 LE

STORE HOURS	
Monday	9:00AM - 6:00PM
Tuesday	9:00AM - 6:00PM
Wednesday	9:00AM - 6:00PM
Thursday	9:00AM - 6:00PM
Friday	9:00AM - 6:00PM
Saturday	9:00AM - 5:00PM
Sunday	Closed



## Idaho Rally Bios



DAVID HIGGINS - Subaru Rally Team USA

Eight time American rally champion, David Higgins is an incredibly accomplished rally driver from the Isle of Man. The Subaru Rally Team USA driver earned a reputation for success by winning nearly every major rally in the country at least once and has set a number of records along the way, earning him a place among the sport's legends. Higgins is a well respected performance driving instructor as well; when he isn't racing in the states, he often travels the world doing one-on-one rally coaching to drivers of every level.





**COOPER  
TIRES**

# Spanish Fork stage map



## Baumhoff Spectator area and directions.



**From Idaho City:**  
**Head northwest on**  
**Centerville Rd toward**  
**Placer St**  
**7.0 miles**  
**Turn right onto Henry**  
**Creek Rd/NF-399 (Across**  
**from Grimes Creek)**  
**Total 7.6 miles for 20**  
**minutes**





lesschwab.com

We'll promise you'll get more  
for your money

**Best Tire Value  
PROMISE®**

Doing the Right Thing Since 1952



## **Idaho Rally Bios**



### **PATRIK SANDELL - Subaru Rally Team USA**

**A multidiscipline driver, Patrik Sandell has taken many wins on both the rallycross circuit and stage rally scene over his varied career. After winning the Junior WRC Championship in 2006, an accomplishment shared with legendary drivers Sebastian Loeb and Sebastian Ogier, Sandell moved into rallycross and currently drives with Subaru Rally Team USA in the Americas Rallycross series. Despite a career shift to rallycross, Sandell has proven his rally skill on multiple recent occasions, including his first rally win in the US earlier this year at Olympus Rally.**

# Grimes pass stage map



## Grimes Pass Spectator area and directions.



Head northwest on Centerville Rd toward Placer St  
7.0 miles  
Turn right on Grimes pass Rd.  
2.9 miles

Total 9.9 miles for 26 minutes

# Idaho Rally Bios

## **SAM ALBERT - DirtFish Motorsports**

Growing up in a northern California logging town, Sam Albert is at home on the rural logging roads where he learned to drive. After stumbling onto a stage rally recap on Speedvision, he realized that rally was essentially his daily commute, only faster. He was instantly hooked. The DirtFish instructor competed as a privateer for nearly a decade before taking a successful step up to the National Championship Series this year. He currently drives a DirtFish in a Rocket Rally-prepped machine.



## **ERIK POTTS - Erik Potts Racing**

A long time competitor in the northeast rally scene, Erik Potts has seen regional success for years in New York and New England. After competing with ARA at Climb to the Clouds and NEFR last year, Potts decided to supercharge his Subaru BRZ and take on the National Championship Series this year. He earned his first National event win this past May at Olympus Rally and has had a place on the podium at nearly every event this season.



**Hoosier**  
RACING TIRE

# Idaho Rally Bio



## **SEAMUS BURKE - JRD Rallysport**

**Veteran rally driver Seamus Burke has been behind the wheel of a rally car for nearly 4 decades; his first event, the 1982 West Cork Rally in Ireland driving a Ford Escort. Since his start, Burke has won multiple rally championships and events while competing behind the wheel of several generations of the Mitsubishi Evo. Last year, Burke introduced a JRD-prepared V6 Ford Escort, same chassis as the first cars he drove competitively, but with a lot more power. He took the 2WD rally scene by storm and is a threat for not just the 2wd win, but the overall podium too.**

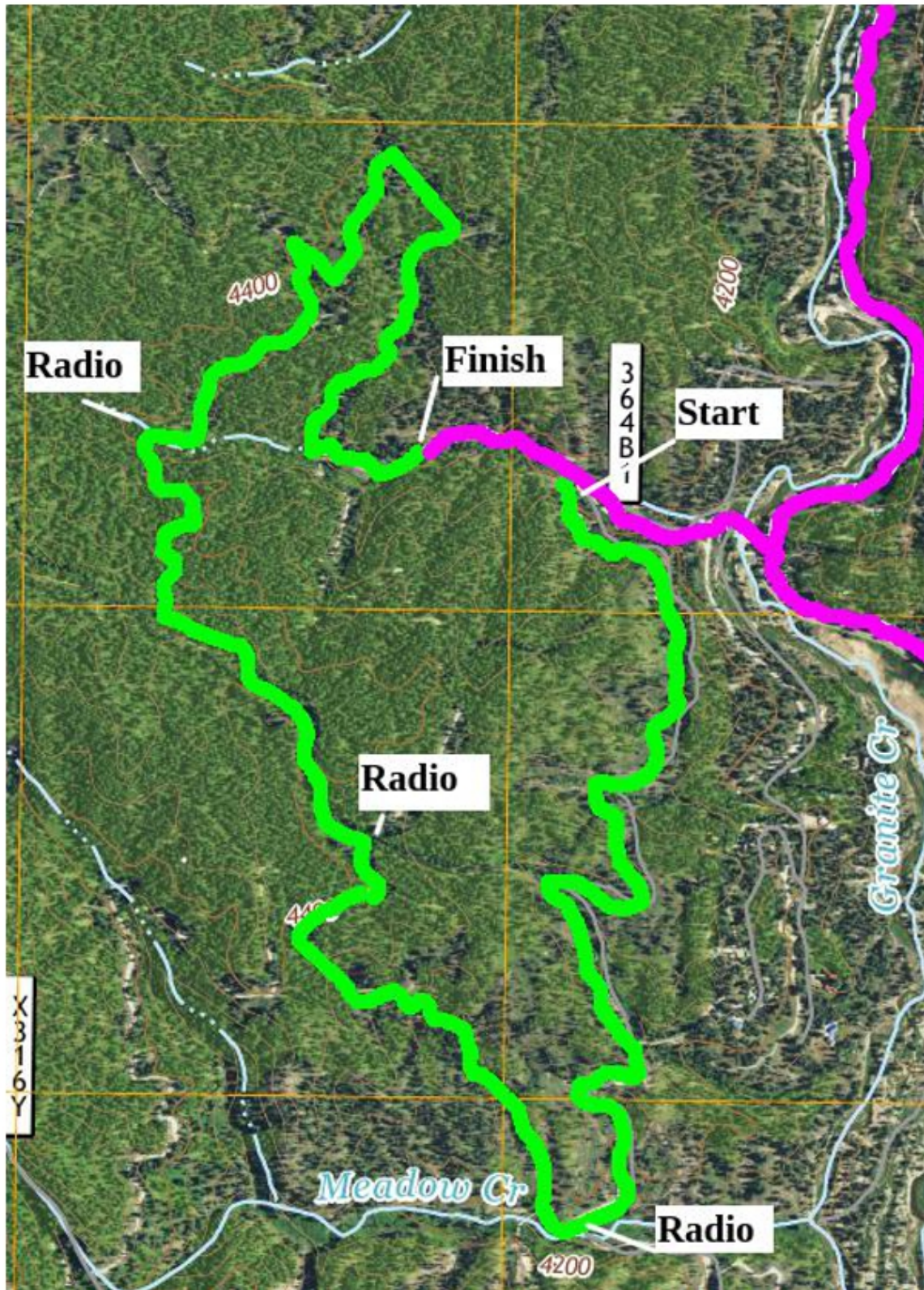


## **Special thanks!**

**Idaho Rally would like to thank the residents and land owners in the areas we are putting this event on. Your patience and understanding is beyond anything we could have hoped for. An event like this can cause Alot of inconviene to alot of people. We would also like to thank all of the municipalities involved. With out your willingness to trust a bunch of high speed dirt lovers to do the right thing we could never do this. Thank you all.**

**Primo Powder  
Coating  
Commercial &  
Industrial  
1129 E Pine Ave  
Meridian, Id 83642  
208-562-0684**

# Meadow Creek



Because ...  
Things Happen™

**W.W. DEAL**  
**INSURANCE AGENCY** INC.



917 2nd Street South  
Nampa, Idaho 83651  
P: (208) 466-2465  
F: (208) 466-2471

**It is encouraged that you visit each spectator area as often as you like.**

**They are located so that you can easily travel between them. Both were chosen for the high speed dirt drift potential.**

**Also Don't forget to stop by Larry Miller Subaru on Friday and Idaho City on Sunday for the Park Expose's**



**Open every day from 10:00am to  
2:00am!**



**517 Main st.  
Downtown Boise, Idaho  
Home of the cheapest strongest drinks in town  
\$2.50 Well Drinks  
\$2.00 Domestic Drafts  
Est. 1937**